



# COLORADO WOMEN'S CHAMBER OF COMMERCE

## ABOUT CWCC

With the lens of advancing women in work and growing women-owned businesses, the CWCC is striving to make Colorado the number one state for women. Through high-level programs, issue-driven events, political action, and crucial professional development, the CWCC helps its members succeed and promotes equity in the workplace.

FOUNDED IN 1988



TO GIVE WOMEN A VOICE IN BUSINESS

ABOUT  
**400**

MEMBER BUSINESSES

NEARLY  
**2,000**

INDIVIDUAL MEMBERS

CORPORATIONS,  
NONPROFITS &

LARGE TO SMALL BUSINESSES

## THE MISSION

To provide women opportunities that better our community and economy, promote equity in the workplace, and help women grow their businesses and their careers.



## JOIN THE CWCC COMMUNITY

Whether you want to achieve professional progress in your career, your business, or community, a CWCC membership can help. Explore membership levels and benefits at [www.cwcc.org](http://www.cwcc.org).





Join us for the more than 100 events and programs each year.

These are opportunities for members to connect, gain in-demand knowledge and skills, and celebrate all of the incredible ways women and local businesses are redefining work in Colorado.

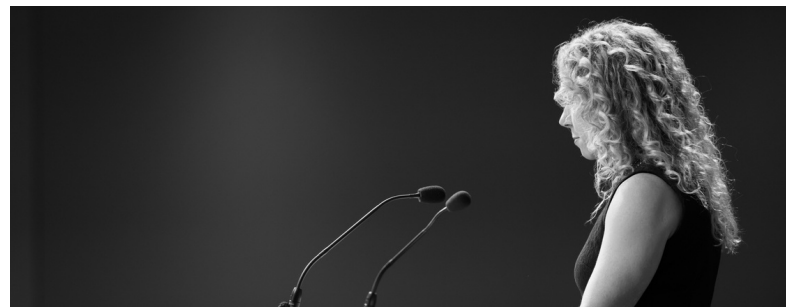
## ISSUE-DRIVEN EVENTS + PROGRAMS

From uplifting storytelling to data-intensive evaluations, the CWCC brings important issues to the forefront and development opportunities for women. Signature events provide opportunities for companies to align with issues important to the advancement of equity and diversity.



### STATE OF WOMEN IN BUSINESS

Evaluating the current state of workforce data, advancement, and pay equity for all women.



### POWERFUL VOICES CONVERSATION SERIES

**PRESENTED BY BANK OF AMERICA**

Local leaders share their inspirational stories of success, failure, perseverance, and vulnerability.



### TOP 25 MOST POWERFUL WOMEN IN BUSINESS

Honoring the achievements of 25 extraordinary women in business in the community



### ATHENA LEADERSHIP AWARD RECEPTION

Recognizing one individual who actively assists women and historically marginalized people in realizing their full leadership potential.

## PROGRAMS

### CWCF MENTORSHIP PROGRAM

Small-group mentoring for senior leaders looking to advance into the C-suite with advance and guidance from influential business leaders.



### PEER GROUPS

Connect with purpose at CWCC programs: CEO Forum, Women's Advancement Group, Founders Forum, and Business Breakthroughs.

### COMMITTEES

Members at certain levels can serve on our Policy or DEI Committees or the Young Professionals Board. Members at all levels are welcome to join regular committee programs, like CWCC Day at the Capitol, legislative session reviews, YP networking events, and DEI sharing sessions.



### CWCF WOMEN'S LEADERSHIP LAB

Development for emerging leaders to lead and influence in their communities, gain skills to support advancement and address inequities, and expand their network of influence.



## CWCC MEMBERS GET DISCOUNTED OR FREE TICKETS TO EVENTS AND PROGRAMS.

**Membership Details (See Membership Levels and Benefits on next page):**

**VETERAN DISCOUNT:**  
10% discount for military veteran-owned business

**APPLICATION FEE:**  
one-time \$25 application fee for all new members.

Memberships are non-transferable and non-refundable. All benefits are to be used within a 12-month membership year and do not carry over.

# Membership Levels & Benefits

	Visionary	Elite	Cornerstone	Classic	Individual-Solopreneur	Individual-Corporate
	\$10,000 annually*	\$5,000 annually*	\$2,500 annually*	\$900 annually	\$475 annually	\$475 annually
<b>Membership Benefits</b>						
Access to all monthly programming. Unlimited access to digital content.	✓	✓	✓	✓	✓	✓
Orientation to learn about engagement, upcoming events, programs, etc.	Custom, On-Site	Virtual	Virtual	Virtual	Virtual	Virtual
Participant (1) CWCF Women's Leadership Lab	FREE (\$3000 value)	Discounted Rate	Discounted Rate			
Participant (1) CWCF Mentorship Program	FREE (\$2000 value)	Discounted Rate	Discounted Rate			
Seats on member-at-large committees including Policy, DEI and Membership & Growth	✓	✓	✓	✓		
Exclusive CWCC Policy Committee listening with legislature session	✓					
TARRA discount	✓	✓	✓	✓	✓	✓
Access to NAWBO Institute & programming				✓	✓	✓
Monthly coworking days					✓	✓
<b>*15% nonprofit discount</b>						
<b>Membership Exposure</b>						
Number of participants	Unlimited	40	20	5	You + 1	You + 1
CWCC sponsorship opportunities	✓	✓	✓	✓	✓	✓
Contribute content on CWCC blog/newsletters	✓	✓	✓	✓	✓	✓
Marketing and social media opportunities	✓	✓	✓	✓		
Job board posts	Unlimited	Unlimited	Unlimited	✓	✓	✓
Exclusive engagement events	✓	✓				
Discounted and pre-sale pricing for signature event sponsorships	✓	✓				
Enhanced directory listing	✓	✓	✓	✓	✓	✓
Logo on CWCC website & events	✓					
Digital Membership Badge	✓	✓				
CWCC Board of Directors*	✓	✓				
Young Professionals Advisory Board*	✓					
<b>*pending application</b>						